



PROMINENCE  
HOMES

# LIVORNO



*Square footage is approximate. Floorplans may vary slightly by elevation. Subject to change without notice.  
Optional features listed are available at additional cost.*

WWW.PROMINENCEHOMESTEXAS.COM  
1120 CAPITAL OF TEXAS HIGHWAY SOUTH, SUITE II-105, AUSTIN TX 78746

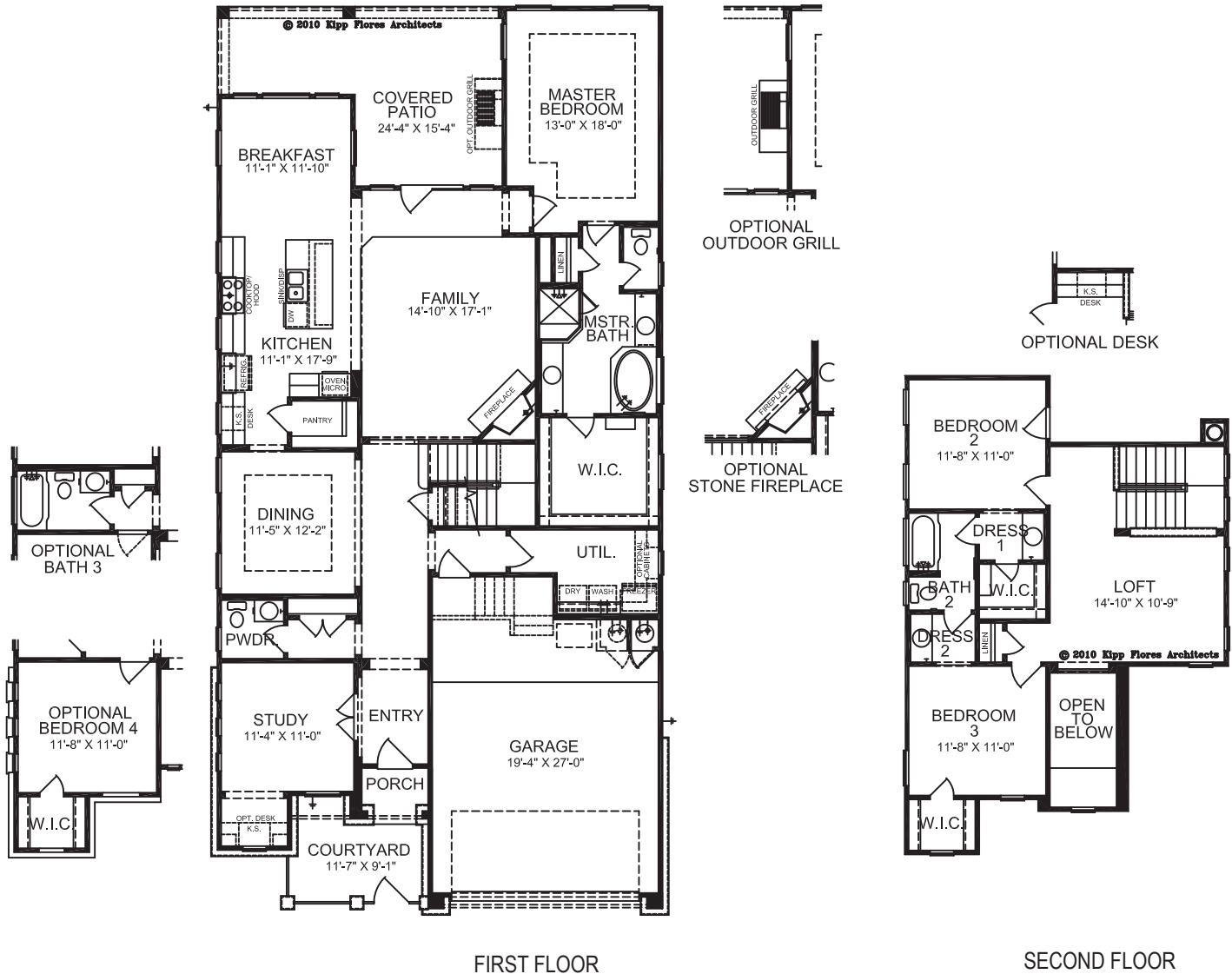


06/06/12



PROMINENCE  
HOMES

# LIVORNO



2,677 SQUARE FEET  
3/4 BEDROOMS  
2.5/3 BATHROOMS  
TWO STORIES

*Square footage is approximate. Floorplans may vary slightly by elevation. Subject to change without notice.  
Optional features listed are available at additional cost.*

